

Corner



Model 1#
set/ctn:20 G.W:22 N.W:21
M3:70X50X35



Model 2#
set/ctn:20 G.W:22 N.W:21
M3:82X60X39



Model 3#
set/ctn:20 G.W:18 N.W:17
M3:84X54X35



Model 4#
set/ctn:20 G.W:19N.W:18
M3:70X46X36



Model 5#
set/ctn:20 G.W:18 N.W:17
M3:62X54X36



Model 5-A#
set/ctn:20 G.W:18 N.W:17
M3:62X54X36



Model 6#
set/ctn:20 G.W:33 N.W:32
M3:88X66X40



Model 7#
set/ctn:20 G.W:28 N.W:27
M3:80X66X35

Corner



Model 8#
set/ctn:20 G.W:18 N.W:17
M3:70X48X40



Model 9#
set/ctn:10 G.W:18 N.W:17
M3:73X46X46



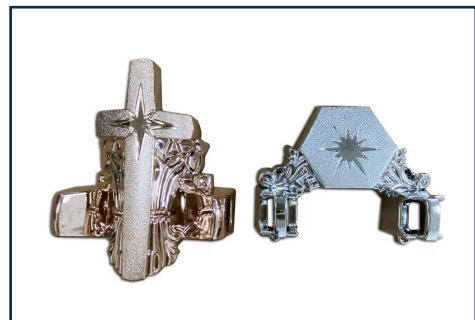
Model 9-A#
set/ctn:10 G.W:18 N.W:17
M3:70X49X49



Model 10#
set/ctn:20 G.W:16 N.W:14
M3:56X42X37



Model 11#
set/ctn:20 G.W:17N.W:16
M3:60X45X35



Model 12#
set/ctn:10 G.W:15 N.W:14
M3:62X50X35



Model 12-B#
set/ctn:10 G.W:15 N.W:14
M3:85X60X37



Model 15-A#
set/ctn:10 G.W:19 N.W:18
M3:80X50X36

Corner



Model 15-B#
set/ctn:10 G.W:19 N.W:18
M3:80X50X36



Model 15-C#
set/ctn:10 G.W:19 N.W:18
M3:80X50X36



Model 15-D#
set/ctn:10 G.W:19 N.W:18
M3:80X50X36



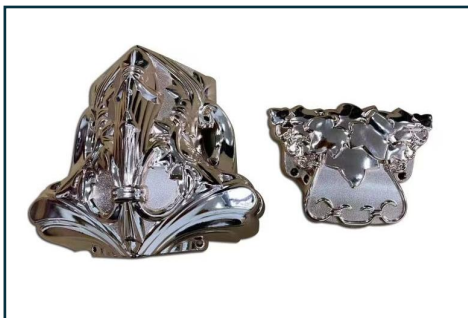
Model 15-E#
set/ctn:10 G.W:19 N.W:18
M3:80X50x36



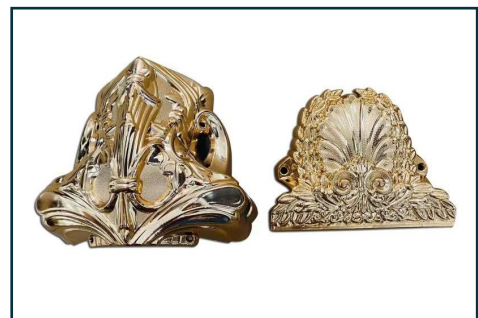
Model 15-F#
set/ctn:10 G.W:19 N.W:18
M3:80X50X36



Model 16#
set/ctn:20 G.W:10N.W:9
M3:55X31X24



Model 17#
set/ctn:10 G.W:19N.W:18
M3:68X50X35

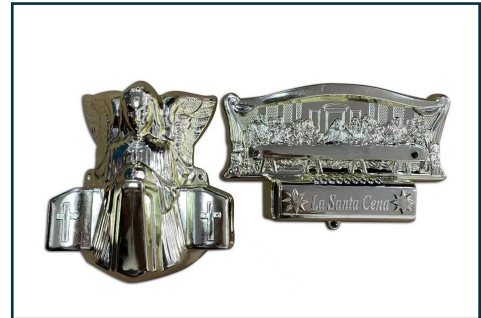


Model 18#
set/ctn:10 G.W:19N.W:18
M3:68X50X40

Corner



Model 19#
set/ctn:10 G.W:19N.W:18
M3:56X47X41



Model 19-B#
set/ctn:10 G.W:19N.W:18
M3:56X47X41



Model Christ A#
set/ctn:10 G.W:19 N.W:18
M3:69X40X34



Model Christ B#
set/ctn:10 G.W:19 N.W:18
M3:78X48X55



Model Cathedral
set/ctn:10 G.W:19 N.W:18
M3:84X55X36



Model Gersy
set/ctn:10 G.W:19 N.W:18
M3:62X52X38



Wine Glass



Model Madrid
set/ctn:10 G.W:19 N.W:18
M3:60X50X35

Corner



Model Madonna#



Model 20#
set/ctn:10 G.W:19 N.W:18
M3:71X45X45



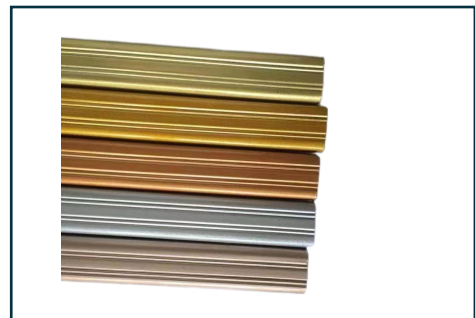
Model 22#



Model 23#



Model24#



Metal Bar



Model25#

Swing Bar Handle (Plastic)



YD-001#
set/ctn:20(set)(80pcs)G.W:22 N.W:20
M3:60X36X46



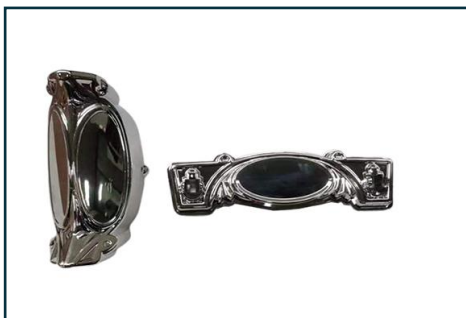
YD-002#
set/ctn:10 G.W:12N.W:11
M3:65X31X30



TX-003#
set/ctn:10(set)(40pcs)G.W:11 N.W:10
M3:63X31X23



YD-004#



YD-005#



YD-006#



YD-007#



YD-008#

Swing Bar Handle (Metal + Plastic)



YD-009#



YD-A



YD-B



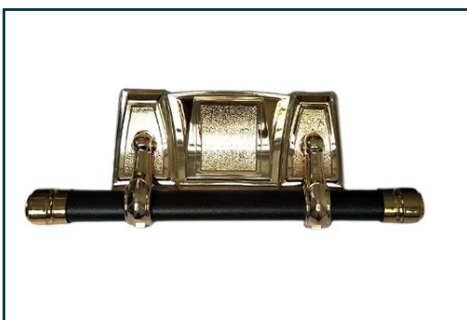
YD-C



YD-D



YD-E



YD-F

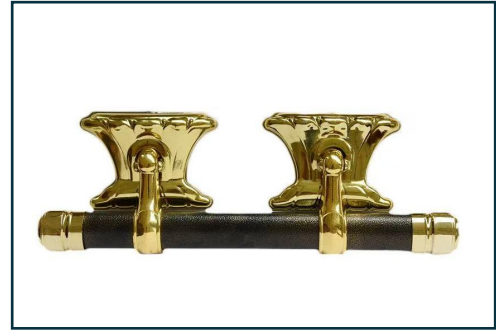


YD-J

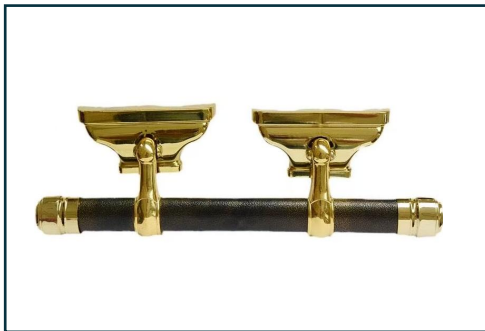
Swing Bar Handle (Metal + Plastic)



YD-I01



YD-I02



YD-I03

Packing

1.Face Plates:10set/ctn
M3:58X35X25 G.W:9 N.W:8

2.MetalBars:10set/ctn
Long:M3:203X18X9 G.W:13 N.W:12.5
Short:M3:67X18X9 G.W:4.2 N.W:3.8

3.Zinc Handles:10set/ctn
M3:38X28X20 G.W:9.5 N.W:9

4.End Cnps:10set/ctn
M3:24X22X20 G.W:3.0 N.W:2.5

Swing Bar Handle (Plastic)



YD-H



YD-L



YD-M



YD-P



YD-N

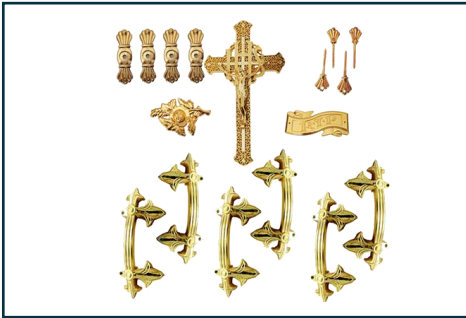


YD-G



A Plate+Angel Corner
set/ctn:10 G.W:11 N.W:10
M3:40X30X24

Plastic Coffin Handle



H9001
set/ctn:25G.W:17N.W:15
M3:136X33X32



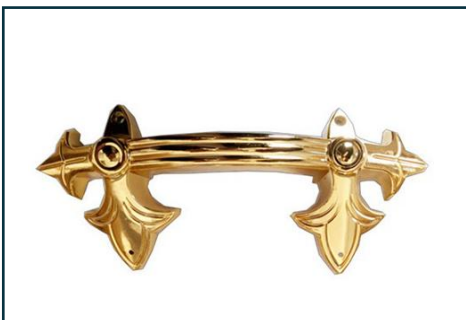
H9002
set/ctn:25G.W:18N.W:16
M3:136X33X34



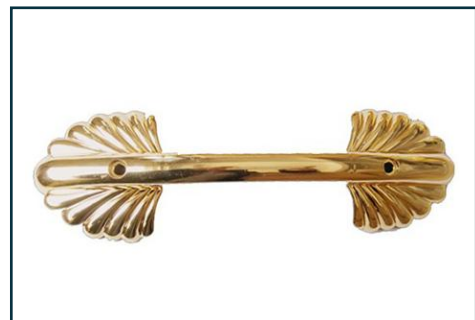
H9003
set/ctn:25G.W:17N.W:15
M3:136X33X32



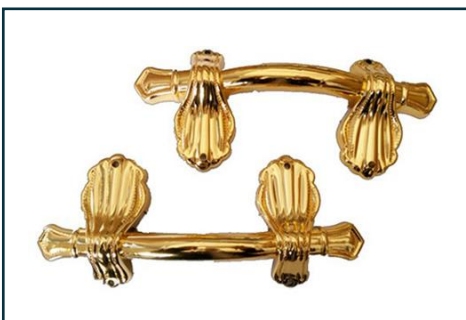
H9004
set/ctn:25G.W:17N.W:15
M3:136X33X32



H9001
pcs/ctn:200 G.W:10 N.W:9
M3:58X42X40



H9002
pcs/ctn:200 G.W:11 N.W:10
M3:58X42X40



H9003
pcs/ctn:200 G.W:10 N.W:9
M3:58X42X40



H9004
pcs/ctn:200 G.W:10 N.W:9
M3:58X42X40

Plastic Coffin Handle



H9005
 pcs/ctn:150 G.W:12 N.W:11
 M3:58X42X40



H9006
 pcs/ctn:200 G.W:12 N.W:11
 M3:60X52X40



H9007
 pcs/ctn:100 G.W:12 N.W:11
 M3:72X46X38



H9008
 pcs/ctn:100 G.W:10 N.W:9
 M3:60X40X30



H9009
 pcs/ctn:100 G.W:9.5 N.W:8.5
 M3:60X45X30



H9009 - 1
 pcs/ctn:100 G.W:9.5 N.W:8.5
 M3:53X39X30



H9010
 pcs/ctn:100 G.W:7 N.W:6
 M3:53X39X30



H9010 - 1

Plastic Coffin Handle



H9011



H9012



H9013

Plastic & Metal Coffin Handle



H9009
pcs/ctn:50G.W:11 N.W:10
M3:50X22X26



H9010
pcs/ctn:50G.W:11 N.W:10
M3:50X22X26



H9011
pcs/ctn:50G.W:10 N.W:10
M3:50X28X21



H9012
pcs/ctn:50G.W:11 N.W:10
M3:55X35X21



H9013
pcs/ctn:50G.W:15 N.W:14
M3:35X35X21



H9014
pcs/ctn:50G.W:15 N.W:14
M3:55X35X21



H9015
pcs/ctn:50G.W:15 N.W:14
M3:55X35X21



H9019
pcs/ctn:50G.W:15 N.W:14
M3:55X35X21



H9020
pcs/ctn:50G.W:11 N.W:10
M3:55X22X26



H9021
pcs/ctn:50G.W:15 N.W:14
M3:46X26.5X24

Metal Coffin Handle



H9016 iron
pcs/ctn:50 G.W:15 N.W:14
M3:55X35X21



H9017



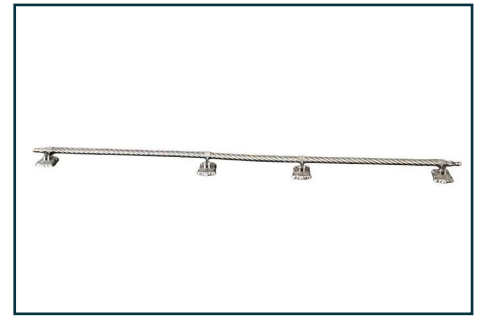
H9018 iron
pcs/ctn:50 G.W:15 N.W:14
M3:55X35X21



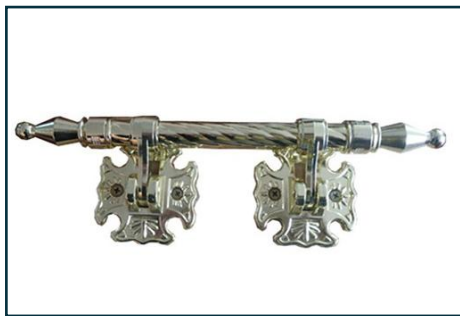
H9023
pcs/ctn:30 G.W:14.3 N.W:13.8
M3:39X31X20cm



H9023-1
pcs/ctn:60 G.W:17.5 N.W:17
M3:39X31X20cm



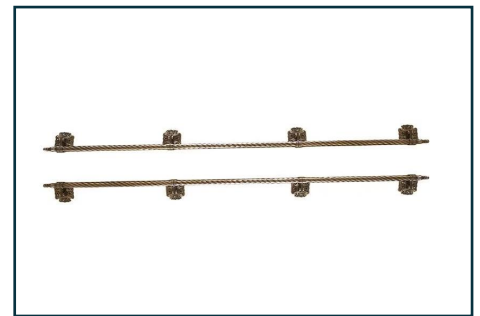
H9023-L
pcs/ctn:25 G.W:21 N.W:20
M3:112X33X25



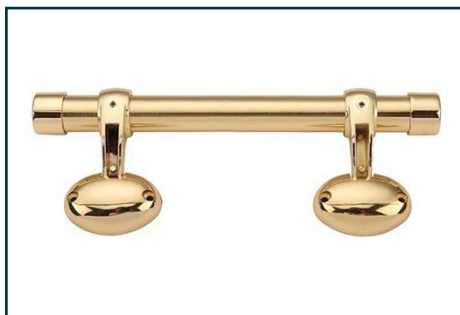
H9025
pcs/ctn:30 G.W:14.3 N.W:13.8
M3:39X31X20cm



H9025-1
pcs/ctn:60 G.W:17.5 N.W:17
M3:39X31X20cm



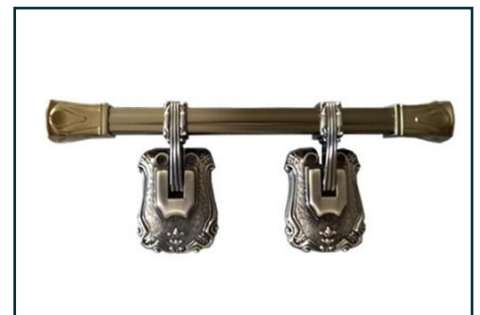
H9025 L
pcs/ctn:25 G.W:21 N.W:20
M3:112X33X25



H9026
pcs/ctn:30 G.W:15.3 N.W:14.8
M3:37X28X21



H9026-1
pcs/ctn:60 G.W:17.5 N.W:17
M3:37X28X21



H9027
pcs/ctn:25 G.W:10 N.W:9
M3:39X31X20cm

Metal Coffin Handle



H9027-1
pcs/ctn:50 G.W:10 N.W:9
M3:39X31X20cm



H9027-L
pcs/ctn:25 G.W:21 N.W:20
M3:112X33X25



H9028
pcs/ctn:25 G.W:10 N.W:9
M3:39X31X20cm



YD-F03
pcs/ctn:50 G.W:15 N.W:14
M3:55X35X21cm



YD-F04
pcs/ctn:50 G.W:15 N.W:14
M3:55X35X21cm



YD-F05



YD-F06

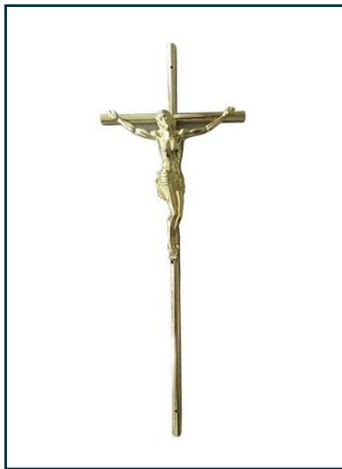
Crucifix



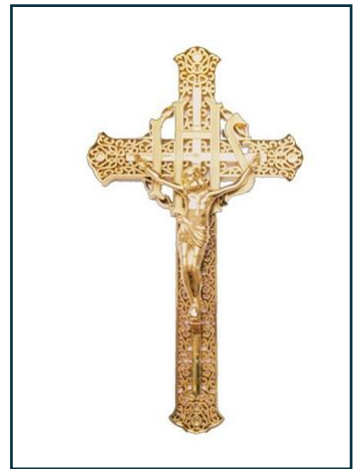
Jeaus 1#
pcs/ctn:50 G.W:7
M3:72X44X24



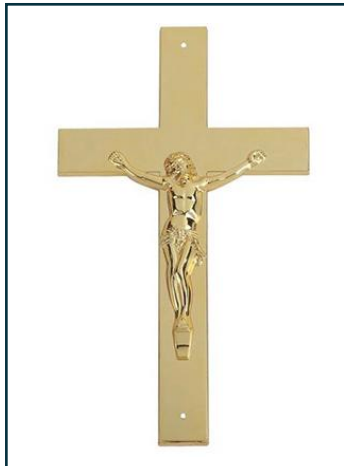
Jeaus 2#
pcs/ctn:100 G.W:6.5
M3:72X44X24



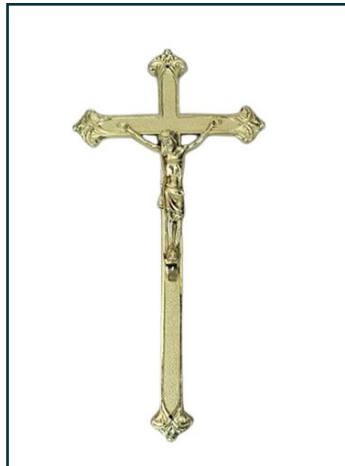
Jeaus 3#
pcs/ctn:100 G.W:7
M3:60X39X21



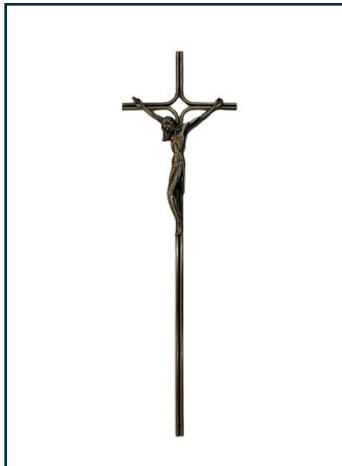
Jeaus 4#
pcs/ctn:100 G.W:8
M3:68X31X30



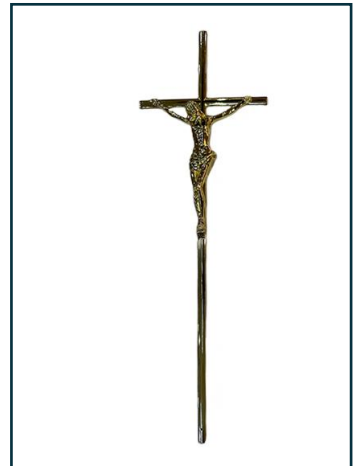
Jeaus 6#
pcs/ctn:200 G.W:8
M3:72X26X33



Jeaus 7#
pcs/ctn:100 G.W:9
M3:60X39X27



Metal Jeaus 1#



Metal Jeaus 2#



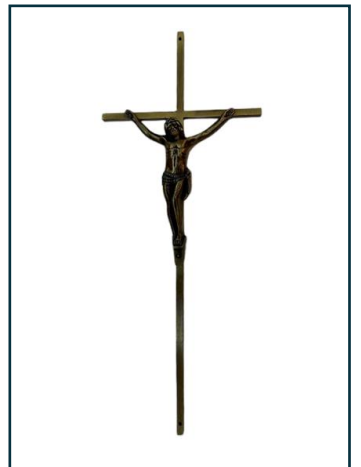
Metal Jeaus 3#



Metal Jeaus 4#



Metal Jeaus 5#



Metal Jeaus 6#

Flower



Flower 1
N.W:21M3:62X43X48
pcs/ctn:1000 G.W:23



Flower 2
pcs/ctn:1000 G.W:15N.W:14
M3:60X37X30



Flower 3
pcs/ctn:500 G.W:16N.W:15
M3:78X40X48



Flower 4
pcs/ctn:500 G.W:12N.W:11
M3:55X43X37



Flower 5
pcs/ctn:200 G.W:10N.W:9
M3:58X57X38



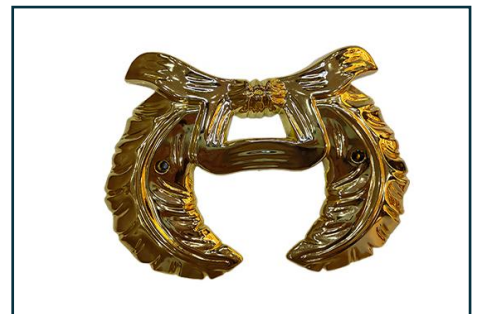
Flower 6
N.W:14pcs/ctn:1000 G.W:15
M3:60X37X30



Flower 7
pcs/ctn:1000 G.W:15N.W:14
M3:60X37X30



Flower 8
pcs/ctn:200 G.W:10N.W:10
M3:44X42X42



Flower 9



Flower 10



Flower 11



RIP
pcs/ctn:1000 G.W:21N.W:19
M3:62X43X42

Screw



Screw 1#(plastic)
pcs/ctn:2000 G.W:21N.W:20
M3:68X28X22



Screw 2#(plastic)
pcs/ctn:2000 G.W:22N.W:21
M3:68X28X22



Screw 3#(plastic)
pcs/ctn:2000 G.W:22N.W:21
M3:68X28X22



Screw 4#(plastic)
pcs/ctn:2000 G.W:22N.W:21
M3:68X28X22



Screw 5#
pcs/ctn:1000 G.W:22N.W:21
M3:68X28X20



Screw 6#
pcs/ctn:1000 G.W:22N.W:21
M3:68X28X20



Screw 7#
pcs/ctn:1000 G.W:22N.W:21
M3:68X28X20



Screw 8#
pcs/ctn:2000 G.W:22N.W:21
M3:68X28X20

Bracket



Bracket 1#
pcs/ctn:2000 G.W:10N.W:9
M3:68X28X20



Bracket 2#
pcs/ctn:2000 G.W:10N.W:9
M3:68X28X22



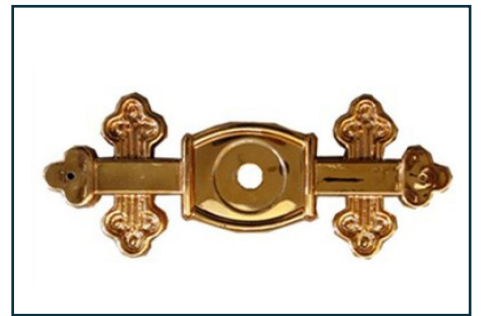
Bracket 3#
pcs/ctn:2000 G.W:10N.W:9
M3:68X28X22



Bracket 4#
pcs/ctn:2000 G.W:10N.W:9
M3:68X28X22



Bracket 5#
pcs/ctn:2000 G.W:10N.W:9
M3:68X28X20



Bracket 6#
pcs/ctn:2000 G.W:10N.W:9
M3:68X28X20



Bracket 7#
pcs/ctn:2000G.W:10N.W:9
M3:68X28X20



Bracket 8#
pcs/ctn:2000 G.W:10N.W:9
M3:68X28X20



Bracket 9#
pcs/ctn:120 G.W:5N.W:4.3



Bracket 10#
pcs/ctn:120 G.W:5N.W:4.3

End Cup & Name Plate & Coffin Lace



End cup
set/ctn:80 G.W:4 N.W:3.5
M3:26X22X22



Name Plate 1#
set/ctn:200 G.W:10.5 N.W:10
M3:72X32X22



Name Plate 2#
set/ctn:100 G.W:5.5 N.W:5
M3:36X26X13



Name Plate 3#
set/ctn:50 G.W:2.5 N.W:20
M3:40X19X10.5



Coffin lace
pcs/ctn:1000 G.W:22 N.W:21
M3:60X24X21

Matel Arm Handle



YD-A01



YD-A02



YD-A03



YD-A04



YD-A05



YD-A06



YD-A07



YD-A08

End Cup & Zinc Screw



YD-B01



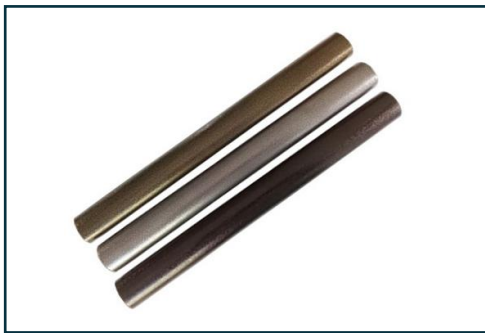
YD-B02



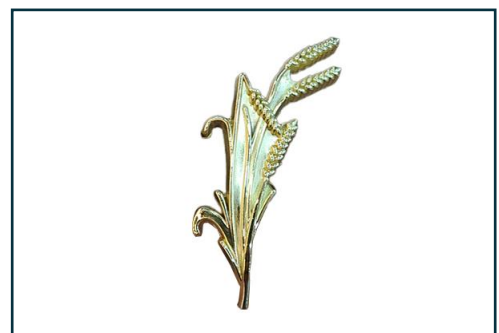
YD-B03



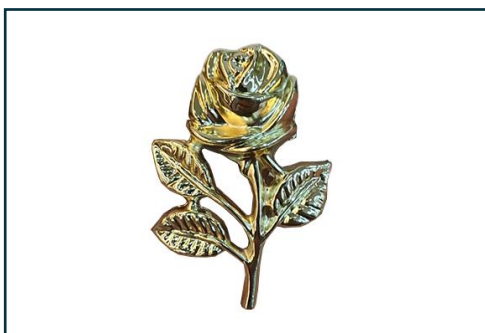
YD-B04



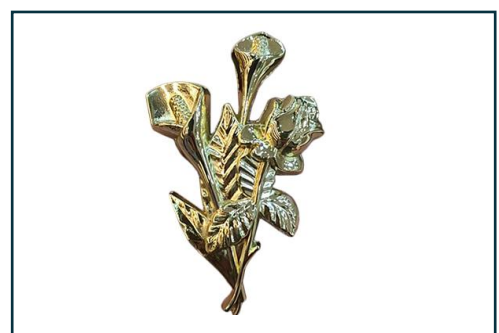
Oval tube



Zinc wheat



Zinc flower 01



Zinc flower 02

End Cup & Zinc Screw



Zinc hand



Zinc leaf



Zinc Screw 01



Zinc Screw 02



Zinc Screw 03



Zinc Screw 04



Zinc Screw 05



YD

Lock & Hinge & Stay Bar



Hinge



iron pipe



Lock A



Lock B



Oval tube



Zinc wheat



round iron pipe